

POWERFUL PROJECT

AGES 4-7

FEBRUARY
2015

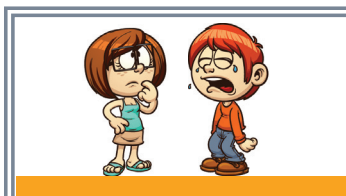
LOYALTY

FIRST & LAST NAME: _____

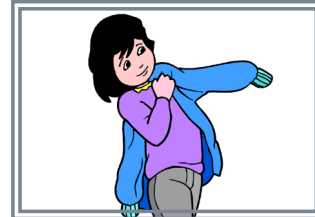
Loyalty means: "I'll stand by you!" We can show loyalty to our family, friends, pets, schools, teams and community. When we are loyal, we stick up for our friends and family members when someone is being mean to them. We keep our promises and do what we say we are going to do. When we are loyal, we stand by our friends when they are feeling sad, angry or scared. We clean up our community and show our support for those who live in it. **Read about our friends below. Who is showing loyalty? Circle our friends who are showing loyalty.**



Sam tells an embarrassing secret to Joy about his best friend, Max.



Eve promises Jim she would play with him. When a new girl asks Eve to play, Eve plays with her instead.



Lu said she is going to Lila's party. She goes to the park instead.



Emma comes home and walks her dog even on rainy days.



How do YOU show you are loyal? Draw or write the answer.

Elijah told his friend, Marco that he would run with him. He is on his way!



Manny is off to practice with the team!



Kim recycles & keeps her street clean!



Are you loyal?

YES

NO

SOMETIMES